

Lenovo Yoga AIOi (32", 10)

Connect your Space

Connect and transform your space into an AI-powered creative hub. The first Lenovo Copilot+ desktop, featuring Intel® Core™ Ultra processors and NVIDIA GeForce RTX 4050 graphics, blends clean, modern design with cutting-edge performance. Tap into your full creativity with AI-driven tools and breathtaking visuals on a 31.5" UHD display.



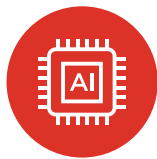
Crafted for Creators, Designed for Home

Your home studio, revolutionized. Designed for work-from-home creators, the ultra-slim Yoga AIOi 32" blends clean aesthetics with intuitive feel. Tilt its metal hinge 20° for an ideal angle, while a 5M IR camera with AI-enhanced tracking, dual mic array and a Dolby Atmos-certified Harmon Kardon quad-speaker setup sharpen every detail.



Visuals That Keep Up with Your Imagination

Make your ideas pop. Engineered for limitless creation, the 31.5" UHD display delivers professional-grade color accuracy with 100% sRGB and over a billion shades. Bright 550-nit visuals shine in any space, while the edge-to-edge design and wide viewing angles give you all the room needed to multi-task, create and collaborate without distractions.



Shape the future with next-gen AI performance

Reshape the future with your creative spirit powered by Intel® Core™ Ultra processors and NVIDIA GeForce RTX 4050 graphics. The Yoga AIOi offers AI-driven performance and energy efficiency, leveling up video editing, 3D rendering, and gaming with real-time ray tracing and lifelike visuals. Premium power meets WFH needs, creating without limits.



A Copilot+ PC

Create and connect effortlessly with Copilot+ PCs—the smartest Windows PCs yet. Windows Studio Effects polishes video calls by enhancing lighting and canceling noise. Cocreator transforms text and sketches into stunning visuals, Recall finds files with a quick description, and Live Captions so you'll never miss a word with real-time subtitles.



Lenovo Yoga AIOi (32", 10)

SPECIFICATIONS

YOGA AIO 32ILL10

PERFORMANCE

Processor

Intel® Core™ Ultra 7 258V
Intel® Core™ Ultra 7 256V

Operating System

Windows 11 Home
Windows 11 Pro

Graphics

Discrete: NVidia RTX 4050 6GB

Memory

16G/32G LPDDR5x 8533

Storage

SSD PCIe 512G / 1TB

Camera

Built-in 5M IR Camera
(Dual Microphone Array, FF)

Audio

Harmon Kardon speaker, certified by Dolby
Atmos, 2x2W tweeter, 2x5W woofer,

Power Supply

170W/300W

Optional

Wireless charging

DESIGN

Display

31.5" 4k (3840*2160) 60Hz, 16:9, UHD
Display, 500nits, 100% sRGB, TÜV
Low Blue Light Certification

Dimensions (W x D x H)²

(mm) : 724.04 x 253.02 x 538.1
(inches) : 27.64" x 9.96" x 21.19"

Weight

Starting at 8.17kg (18.01 lbs)

CONNECTIVITY

WLAN

WiFi 7 320MHz

Bluetooth³

Bluetooth® 5.4

I/O (Input/Output) Ports¹ & Function Key

Stand (Side):

Electric camera shutter

Stand (Rear):

- 1x TBT4 (40Gb/s)
- 1x USB3.2 Full-Functioned Type-C in
- 2x USB-A 3,2
- HDMI-out (2.1/TMDs)
- Headphone & Mic combo
- Power DC in
- Power button

PRELOADED SOFTWARE

- Windows 11 Home/Pro
- Lenovo Vantage
- Microsoft 365 Trial
- McAfee® LiveSafe™
- Lenovo AI Now

¹ All battery life claims are approximate and based on two methods of testing: continuous Local Video Playback and Web Browsing @ 150 nits brightness on the latest update of Windows 11. Actual battery life will vary and depends on many factors such as product configuration and usage, software use, wireless functionality, power management settings, and screen brightness. The maximum capacity of the battery will decrease with time and use.

² Height is calculated using T2 measurements and should be considered 'as thin as'.

³ The actual transfer speed of the USB 3.2 will vary and, depending on many factors, such as the processing capability of host and peripheral devices, file attributes and other factors related to system configuration and your operating environments, may be slower than a speed of 20 Gbit/s.

⁴ EPEAT-registered where applicable - see www.epeat.net for registration status by country.

LENOVO SERVICES

Lenovo Premium Care Plus

Lenovo Premium Care Plus is the ultimate PC support experience with you as our priority 24/7. Enjoy personalized hardware and software support from a global network of elite technicians, along with accidental damage protection, fast repairs with onsite support, extended battery warranty, data migration assistance, and smart performance solutions that optimize PC performance and security.

Lenovo Smart Performance

Smart Performance Services within Lenovo Vantage will keep your system running at optimum performance and proactively fix issues that affect PC performance, internet performance, remove malware, and improve device security.

Lenovo Accidental Damage Protection

Avoid the hassles of unexpected damage & repair costs. With coverage for drops, spills, electric surges, and broken LCD screens, accidental damage protection makes it easy to repair to your PCs and ensures your device is up and running fast.

Lenovo CO₂ Offset Services

Offset the carbon emissions of your PC with Lenovo CO₂ Offset Services - an easy and transparent solution to offset emissions across the average lifecycle of your device. These offsets are invested in UN-approved initiatives like renewable energy or ecological projects, thus contributing towards a more sustainable future.

Lenovo Sealed Battery Warranty

Long-lasting battery life is not just a feature but a necessity to help you stay productive and connected all day long. Protect your PC's sealed battery from degradation, enjoy hassle-free battery replacement service, and safeguard your PC from future battery failure with our Sealed Battery Warranty Service.

Lenovo Warranty Extensions (Up to 3 Years Duration)

Gain complete peace of mind by extending your base warranty to up to 3 years and minimize unexpected repair costs.



McAfee® LiveSafe™

Register McAfee® to enjoy these benefits in your FREE 30-day trial.

- Award-winning Antivirus
- Password Manager
- Safe Web Browsing
- Multi-device Compatibility
- Identity Theft Protection
- Free Customer Support

* Example of Lenovo catalogue naming convention

Yoga	AIOi	32	1	L	L	10
Sub-brand	Form Factor	Screen Size	Platform Code	Generation		

Intel® platform codes

Gemini Lake: **IGM**, Whiskey Lake: **IWL**, Icelake: **IIL**, Gemini Lake: **IGL**, Comet Lake: **IML**, Tiger Lake: **ITL**, Alder Lake: **IAP**, Alderlake-HX: **IAH**, Alderlake-U15: **IAU**, Alderlake-P28: **IAP**, Alderlake-P28/U15: **IAL**, Alderlake-H45: **IAH**, Alderlake N: **IAN**, Raptorlake-PX: **IRP**, Raptorlake-H: **IRH**, Raptorlake-HX: **IRX**, Alderlake-M U9: **IAM**, Raptorlake U: **IRU**, Meteorlake P: **IMP**, Raptorlake-P: **IRP**, Raptorlake-P28/U15: **IRL**, Meteor Lake-H: **IMH**, Lunar Lake: **ILL**.

WWW.LENOVO.COM

Lenovo reserves the right to alter product offerings and specifications at any time, without notice. Lenovo makes every effort to ensure accuracy of all information but is not liable or responsible for any editorial, photographic or typographic errors. All images are for illustration purposes only. For full Lenovo product, service and warranty specifications visit www.lenovo.com. Lenovo makes no representations or warranties regarding third party products or services. **Trademarks:** The following are trademarks or registered trademarks of Lenovo: Lenovo, the Lenovo logo, ideapad, IdeaCentre, yoga and yoga home. Microsoft, Windows and Vista are registered trademarks of Microsoft Corporation. Intel, the Intel logo, Intel Inside, Intel Core, and Core Inside are trademarks of Intel Corporation in the U.S. and/or other countries. Other company, product and service names may be trademarks or service marks of others. Visit www.lenovo.com/lenovo/us/en/safecomp/ periodically for the latest information on safe and effective computing.

©2024 Lenovo. All rights reserved.



Lenovo